



ARIZONA
EDUCATIONAL FOUNDATION



ARIZONA
SPELLING
BEE

SATURDAY, MARCH 16, 2024



ARIZONA EDUCATIONAL FOUNDATION

presents

THE 2024 ARIZONA SPELLING BEE

March 16th, 2024

Madison Center for the Arts



Arizona Educational Foundation Donors
Apple Orchard Level | \$50,000+



Apple Tree Level | \$20,000+



Golden Delicious Apple Level | \$10,000+



THE ARIZONA EDUCATIONAL FOUNDATION WELCOMES AND CONGRATULATES THE 2024 STATE SPELLING BEE FINALISTS

About the Arizona Educational Foundation

The mission of the Arizona Educational Foundation is to celebrate excellence and cultivate equity in PK-12th grade Arizona public education. We give Arizona public education the shine it deserves.

The Arizona Educational Foundation was founded in 1983 by key leaders in business and education who believed that improving public education was too great a task for school districts to do alone. With this in mind, they set out on a joint partnership that continues to positively impact public schools today.

AEF fosters excellence in education by funding programs that enhance the capabilities of Arizona's school districts to strengthen the teaching profession, design high quality curricula and stimulate student achievement. Programs sponsored by AEF are statewide in scope and benefit.

As a private 501c3 nonprofit corporation, the Foundation board is comprised of business, education and community leaders. The diversity of the board allows the Foundation to bring about a full partnership between the business and the educational communities.

AEF's founders include former Arizona State Superintendent of Public Instruction **Carolyn Warner**, Basha's CEO and education advocate **Eddie Basha**, and retired director of public relations for The Arizona Republic **Bill Shover**.

GOALS

- Administer high-quality, well-known and sought-after programs that identify and recognize excellence in schools, school administration, teaching and students statewide.
- Serve as a resource for educators to facilitate excellence in education and develop tools or systems to share best practices.
- Foster partnerships and raise awareness about AEF and its mission among educators, government officials, the private sector and the public to benefit the educational community.

AEF® PROGRAMS

- AEF A+ School of Excellence®
- AEF Arizona Spelling Bee
- AEF Arizona Teacher of the Year®
- AEF Our World
- AEF Principals Leadership Academy of Arizona® (PLAA)
- AEF Take Your Legislator to School (TYLTS)
- AEF teachSTEM



SPELLING BEE PROGRAM

March 16, 2024

9:15 AM

House Opens

9:30 AM

Preliminary Round Begins

12:00 PM

LUNCH (At conclusion of Prelims)

1:00 PM

House Opens

1:15 PM

Final Round Begins

3:15 PM

Estimated End of Bee

The Awards Presentation will immediately follow the Spelling Bee.

OFFICIALS



**DR. TERESA M. HILL, ARIZONA SPELLING BEE
COORDINATOR & EMCEE**

CEO of Tucson Values Teachers; Deputy Director, Arizona Educational Foundation; 2021 AZ NASSP Principal of the Year; Educational Leadership Clinical Professor, Northern Arizona University

Dr. Teresa Hill has 29 years of experience as an educator in Arizona public schools, and served 18 ½ years at Flowing Wells High School as a math teacher, dance teacher, and Assistant Principal. She was also the Principal at Walden Grove High School for 11 years. Upon retiring in January of 2022, Dr. Hill became the Deputy Director at the Arizona Educational Foundation. She has recently accepted a new position as the CEO of Tucson Values Teachers and is saddened to say this is her last Bee. She is thankful for all the wonderful experiences the bee has brought and will continue to follow the Arizona Bee participants who compete at the Scripps National Bee each year, in hopes that one will become the second winner from Arizona!

OFFICIALS



CLIFF ANGLE, PRONOUNCER

Superintendent of the Valentine Elementary School District

Can you spell libel? If you can, you would have advanced beyond Cliff Angle in the Arizona State Spelling Bee. He knows just how it feels to sit in the seat of an Arizona State Spelling Bee participant. He didn't win the spelling bee that year, but it made an impression on him. That impression has led to him being the pronouncer for the Arizona State Spelling Bee since 2019. Cliff has enjoyed working with students not only during the Spelling Bee, but also throughout his career as a math teacher, principal, and superintendent. He is currently the co-founder of EDUneers of the Future, an educational consulting group working with teachers and leaders to bridge the gap between instructional practices and student achievement. His career spans over 30 years in education and education-related fields.



MARJANEH GILPATRICK, HEAD JUDGE

Associate Vice President of Statewide Initiatives at Northern Arizona University's Academic & Workforce Alliances; Arizona Educational Foundation Board Vice President

Dr. Marjaneh Gilpatrick has been a member of AEF's Board since 2012. She is the Associate Vice President of Statewide Initiatives at Northern Arizona University's Academic & Workforce Alliances where she is also a clinical professor. Previously, she was Associate Dean of Outreach, Research and Development in the College of Education at Grand Canyon University. Additionally, she serves as the treasurer on the Board of Directors for Educators Rising Arizona; member at large of Arizona Teachers of English to Speakers of Other Languages; vice-chair of Southeast Maricopa Regional Council of Arizona First Things First; and president of the Arizona School Administrators' Higher Education Division. Prior to joining GCU, Marjaneh was the Instructional Specialist, Chair of the Reading Department and Coordinator for Advancement Via Individual Determination (AVID) at a junior high school, an adjunct instructor at Maricopa County Community Colleges where she taught ESL and education courses, and a 3rd and 4th grade ESL teacher. She and her husband of 33 years have three children ages 22-29.

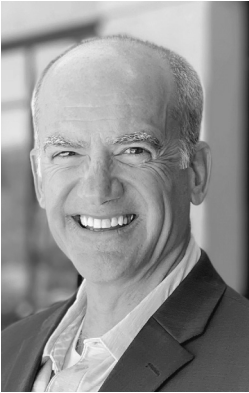
OFFICIALS



ANNE RICKARD, JUDGE

Director, Community Partnerships, SRP

Anne Rickard is a near-native resident of Arizona and is a proud graduate of the Paradise Valley school system and Northern Arizona University. She held a variety of positions in the advertising field before joining SRP 25 years ago. She currently holds the position of Director of Community Partnerships and oversees an amazing team that identifies, develops and directs partnerships in a measured approach to community involvement through community stewardship, charitable contributions, corporate sponsorships, safety outreach, volunteerism and event activation. Anne is dedicated to her community both through her work and personal life, having held several board positions with her kids' schools and currently serves on the board of Habitat for Humanity Arizona. Anne and her husband Ron are proud parents of two grown children and are figuring out how to be new empty-nesters (along with their dogs). When not at work, you'll find her traveling, reading, cooking and spending cherished time with friends and family. She's thrilled to be a spelling bee judge!



DAVID WILLIAMS, JUDGE

Director of Operations, Cable One; Arizona Educational Foundation Board Member

David Williams is Director of Operations at Cable One in Phoenix. He joins AEF after serving on the board of the Education Foundation in Odessa, Texas. His 30-year career in telecommunications has taken him from New England to the Upper Midwest and Deep South. He and his wife, a Montessori teacher, look forward to promoting public schools. Their passion stems from seeing their three adult children thrive thanks to the public schools they attended.

VOLUNTEERS

Thank you to the following volunteers: Mike Behling, Sheryl Behling, Ben Collinsworth, Michelle Doherty, Brandon Flores Anita Fogarty, Kim Hernandez, Kristie Jackson, Deea McBride, Terri Noll, Courtney Smitham, and Estella Torrez.

Thank you for helping make this event a success!



SPELLING BEE PRIZES

All Spelling Bee Finalists receive: 2024 AEF Spelling Bee Finalist Medal; AEF Spelling Bee Finalist T-shirt, and a Merriam Webster's Dictionary compliments of International Commerce High School-Tempe.

First Place: Trophy; airfare and hotel accommodations for champion and one chaperone to participate in the 2024 Scripps National Spelling Bee; \$800 spending money for D.C.; A 1-year subscription to Merriam-Webster Unabridged Online courtesy of Merriam-Webster; Samuel Louis Sugarman Award of a 2024 United States Mint Proof Set in June 2024; a 1-year subscription to Britannica Online Premium courtesy of Encyclopedia Britannica; 'Stingers' Regional/National Words eMentor compliments of Hexco Academic.

Second Place: Trophy; airfare and hotel accommodations for champion and one chaperone to participate in the 2024 Scripps National Spelling Bee; \$800 spending money for D.C.; A 1-year subscription to Merriam-Webster Unabridged Online courtesy of Merriam-Webster; Samuel Louis Sugarman Award of a 2024 United States Mint Proof Set in June 2024; a 1-year subscription to Britannica Online Premium courtesy of Encyclopedia Britannica; 'Stingers' Regional/National Words eMentor compliments of Hexco Academic.

Third Place: Trophy; 'Stingers' Regional/National Words eMentor compliments of Hexco Academic; \$50 Amazon gift certificate courtesy of the Arizona Educational Foundation.

Fourth and Fifth Place: Trophy; \$25 Amazon gift certificate from the Arizona Educational Foundation.

TROPHIES AND SELECT PRIZES WILL BE AWARDED AT THE END OF THE PROGRAM.



CHECK OUT THE OFFICIAL ARIZONA SPELLING BEE STORE!

2024 ARIZONA SPELLING BEE STATE FINALISTS:



Aliyah Alpert
8th Grade, Age 13,
Alpert Home School, Homeschool
Yavapai County



**Bhavyasri
Balasubramaniam**
5th Grade, Age 10,
Legacy Traditional School-Glendale,
Independent Charter School,
Maricopa County Region 4



Bryant Banzhaf
5th Grade, Age 10, Rattlesnake
Ridge Elementary School,
Marana Unified School District,
Pima County



Ricardo Cabrera
8th Grade, Age 14, Dodge
Traditional Magnet Middle School,
Tucson Unified School District,
Pima County

2024 ARIZONA SPELLING BEE STATE FINALISTS:



Noah Clark
8th Grade, Age 13, Flagstaff Home
Educators, Homeschool,
Coconino County



Meridian Creath
5th Grade, Age 11, Creath Academy,
Homeschool,
Maricopa Region 3



Landon Curtis
8th Grade, Age 14, Fairbanks Middle
School, Morenci School District,
Greenlee County



Onnie Estes
6th Grade, Age 11, Alpine
Elementary School, Alpine
Elementary School District,
Apache County

2024 ARIZONA SPELLING BEE STATE FINALISTS:



Anthony Estrella

8th Grade, Age 13, Legacy
Traditional School-Surprise,
Independent Charter School
Maricopa Region 5



Isabelle Garcia

7th Grade, Age 13, Kyrene del
Pueblo Middle School, Kyrene
Elementary School District
Maricopa Region 1



**Kavyadharshini
Hariharan**

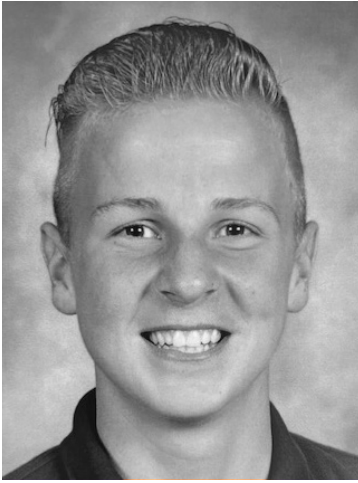
8th Grade, Age 13, Painted Rock
Academy, Independent Charter
School, Maricopa Region 4



Alrick James

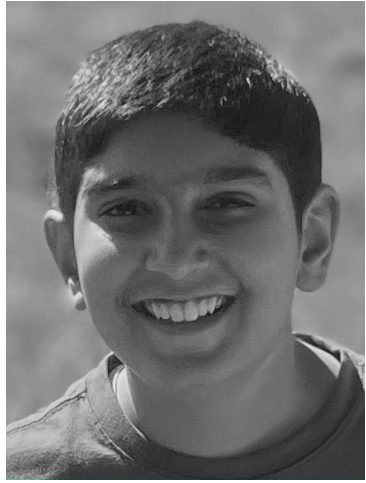
5th Grade, Age 11, Estrella Foothills
Global Academy, Laveen School
District,
Maricopa Region 3

2024 ARIZONA SPELLING BEE STATE FINALISTS:



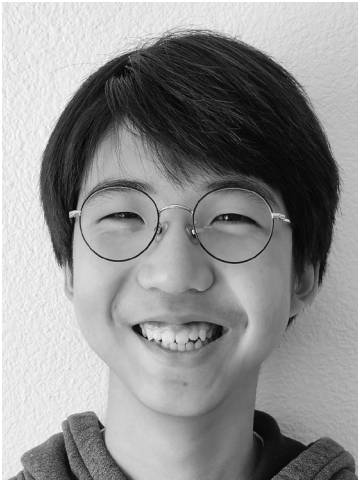
Ethan Knudson

8th Grade, Age 14, Masada Charter School, Independent Charter School
Mohave County



Aneesh Kulkarni

6th Grade, Age 12, Desert Trails Elementary, Paradise Valley Unified School District
Maricopa Region 2



Sihyun Kyong

8th Grade, Age 13, BASIS Ahwatukee, Independent Charter School
Maricopa Region 1



Aaliyah Magsano

8th Grade, Age 14, Legacy Traditional School-Queen Creek, Independent Charter School,
Pinal County

2024 ARIZONA SPELLING BEE STATE FINALISTS:



Esha Marupudi

6th Grade, Age 11, BASIS Chandler,
Independent Charter School,
Maricopa Region 6



**VenkataSuchith
Nathani**

7th Grade, Age 12, Arizona College
Prep Middle School, Chandler
Unified School District
Maricopa Region 6



Carlie Nguyen

4th Grade, Age 9, Archway Trivium
School, Great Hearts Charter School,
Maricopa Region 5



Kason Nunley

8th Grade, Age 14, Safford Middle
School, Safford Unified School
District,
Graham County

2024 ARIZONA SPELLING BEE STATE FINALISTS:



Natalie Pinkerton

5th Grade, Age 11, Dorothy Hall
Elementary School, Yuma School
District
Yuma County



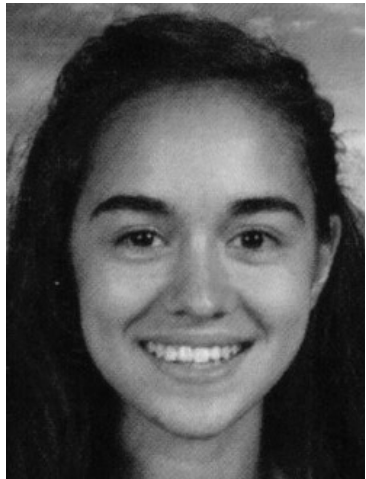
Finley Roberts

8th Grade, Age 14, Dragon
Claw Academy Middle School,
Independent Charter School,
Maricopa Region 2



Jacob Schliekelman

4th Grade, Age 9, Ehrenberg
Elementary School, Quartzsite
Elementary School District,
La Paz County



Alexis Simon

8th Grade, Age 13, Little Red School
House, Santa Cruz Elementary
School District,
Santa Cruz County

2024 ARIZONA SPELLING BEE STATE FINALISTS:



Avery Smith-Hendricks

6th Grade, Age 12, Leading Edge
Academy-Maricopa, Independent
Charter School,
Pinal County



Kaitlin Stephens

8th Grade, Age 13, Veritas Christian
Community School, Private Christian
School,
Cochise County



Lathan Strom

7th Grade, Age 13, Miami Jr/Sr High
School, Miami Unified School District,
Gila County



Shaunce' Yellowhair

8th Grade, Age 14, Winslow Junior
High School, Winslow Unified School
District, Navajo County

2024 AEF ARIZONA SPELLING BEE RULES

NOTE: These rules pertain to the AEF™ Arizona Spelling Bee administered by the Arizona Educational Foundation; they may or may not be reflective of Scripps National Spelling Bee Suggested Rules. The Scripps National Spelling Bee has no authority over the conduct of local spelling bees, namely bees other than the National Spelling Bee in Washington D.C. Consequently, the national office will not render judgments relating to the conduct of local spelling bees. The Arizona Educational Foundation (AEF) has no authority over the conduct of bees leading up to the Arizona Spelling Bee. Consequently, AEF will not render judgments relating to the conduct of bees leading up to the Arizona Spelling Bee. Individuals bearing complaints about the conduct of local spelling bees should register their concerns with local spelling bee officials. ALL DECISIONS OF LOCAL SPELLING BEE OFFICIALS ARE FINAL.

ELIGIBILITY: A speller qualifying for the 2024 Arizona Spelling Bee competition must meet these requirements.

1. (a) The speller must not have passed beyond the eighth grade or an international equivalent on or before August 31, 2023. (b) The speller must not have reached their 15th birthday on or before August 31, 2023. (c) The speller must not have any first-, second- or third-degree relatives (i.e., sibling, parent, step-parent, grandparent, aunt, uncle, niece, nephew, half-sibling, step-sibling or first cousin) who are current employees of The E.W. Scripps Company as of February 1, 2024. (d) The speller must not previously have won an SNSB national competition. (e) The speller must attend a school that is officially enrolled with the SNSB during the 2023-2024 school year. (f) The speller must not have repeated any grade for the purpose of extending spelling bee eligibility. If the speller has repeated any grade, the speller must notify AEF of the circumstances of grade repetition by March 1, 2024, and AEF will, in its sole discretion, determine the speller's eligibility status on or before March 10, 2024. (g) The speller — or the speller's parent, legal guardian or school official acting on the speller's behalf — must not have declared to another entity an academic classification higher than eighth grade for any purpose including high school graduation equivalency or proficiency examinations and/or examinations such as the PSAT, SAT or ACT. (h) The speller must not have earned the legal equivalent of a high school diploma. (i) The speller must not bypass or circumvent normal school activity to study for spelling bees. The SNSB defines normal school activity as adherence to at least four courses of study other than language arts, spelling, Latin, Greek, vocabulary, and etymology for at least four hours per weekday for 34 of the 38 weeks between August 22, 2023, and May 15, 2024. (j) Once having been disqualified at any level of a regional partner's spelling bee program between August 2023 and March 2024, the speller may not seek advancement in the 2024 AEF program through another regional partner and/or enrollment in another school. (k) The speller must have been declared a champion of an SNSB-sanctioned regional spelling bee on or after February 1, 2023 or be named as a national competitor by competing in an official SNSB program or by an SNSB regional partner. (l) The speller, upon qualifying for the 2024 AEF Arizona Spelling Bee competition, must submit to AEF a completed Champion Registration, an Appearance Consent and Release Agreement signed by speller and speller's parent/legal guardian, a liability waiver signed by speller and speller's parent/legal guardian, and a photo. AEF may disqualify any speller prior to or during the state competition who is not in compliance with any of the above eligibility requirements. Further, AEF may, at any time between

the conclusion of the 2024 AEF Arizona Spelling Bee Competition and April 30, 2024, require any speller who is found to have not been in compliance with any of the above eligibility requirements to forfeit and/or return any prizes, rank and other benefits accorded to the speller as a result of participation in the 202 AEF Arizona Spelling Bee competition.

NOTE: With regard to requirements (b), spelling bee officials at the school, district, county, regional or state level may, at their discretion, set a minimum grade and/or age limit, though there are no minimum grade and/or age limits at the AEF Arizona Spelling Bee or Scripps National Spelling Bee.

RULES:

- 1. Format:** Contests for classroom, school, charter, district, city, regional or home-school championships may be conducted either in writing or orally, or a combination of the two. Introduction of a supplemental vocabulary component into a spelling bee competition at any level in Arizona is optional. The state finals will be an oral competition (spellers will not be allowed to use writing instruments or paper during the competition) and conducted in rounds. Each speller remaining in the spelling bee at the start of a round spells one word or answers one vocabulary question in each round.
- 2. Competition list:** Spelling bee officials are responsible for selecting the competition lists for use in their spelling bees and are encouraged to use the appropriate level of competition list generated annually by the SNSB. These competition lists include words that appear in the current edition of two study resources — the School Spelling Bee Study List and Words of the Champions. Also, these competition lists end with a section of words that do not appear in the aforementioned study resources and are for use near the end of a spelling bee, if spelling bee officials determine that their use in the spelling bee is warranted. All words appearing on annual SNSB competition lists are entries in Merriam-Webster Unabridged, the official dictionary of the SNSB, available at <https://unabridged.merriam-webster.com>. Merriam-Webster Unabridged is the final authority and sole source for the spelling of words; the primary source used to craft the pronunciations, definitions and language origins for the SNSB competition lists; and the only authority to be consulted by spelling bee officials. Some word information appearing in the annual SNSB competition lists may have been drawn from the most recent copyrights of Merriam-Webster publications because the SNSB deemed the information helpful to the speller, however the SNSB is not obligated to draw supplemental material from other publications.
- 3. Speller Accommodations:** Spelling bee officials will strive to provide accommodation for spellers who have diagnosed and documented conditions. All requests for spelling bee officials to provide accommodations should be directed to spelling bee officials well in advance of the spelling bee date. The Arizona Educational Foundation must be notified of any special needs accommodations at the Arizona State Spelling Bee before March 1, 2024. The judges have discretionary power to amend oral requirements on a case-by-case basis for spellers with diagnosed medical conditions involving sight, hearing, speech or movement.
- 4. Pronouncer's role:** The pronouncer pronounces words or reads vocabulary questions and answer choices and provides word information as listed in SNSB competition lists. The pronouncer strives to pronounce words according to the diacritical markings in SNSB competition lists. In Oral Spelling Rounds: Homonyms: If a word has one or more

homonyms, the pronouncer indicates which word is to be spelled by defining the word. AEF makes every effort to identify words with homonyms within the competition list; however, there is no guarantee that all homonyms have been identified. The ultimate responsibility for understanding the word to be spelled rests with the speller. Speller's requests: The pronouncer responds to the speller's requests for a definition, sentence, part of speech, language(s) of origin and alternate pronunciation(s) as listed in the competition list. The pronouncer does not entertain root word questions, requests for alternate definitions or requests for slower pronunciation. Pronouncer's sense of helpfulness: The pronouncer may offer word information from the competition list without the speller having requested the information.

5. Judges' role: The judges uphold the rules and determine whether or not words are spelled correctly. They also render final decisions on appeals in accordance with Rule 9. They are in complete control of the competition and their decision is final on all questions. Interaction with the speller: Because seeing the speller's lip movements may be critical in detecting misunderstandings or misspellings, the judges encourage spellers to face them when pronouncing and spelling the word. Notice of rules: The judges ensure that all spellers and audience members are given an opportunity to receive a complete copy of the rules prior to the start of the spelling bee. Misunderstandings: The judges participate in the exchange of information between the speller and pronouncer if they feel that clarification is needed. Also, the judges listen carefully to the speller's pronunciation of the word; and, if they sense that the speller has misunderstood the word, the judges work with the speller and pronouncer until they are satisfied that reasonable attempts have been made to assist the speller in understanding the word. While the judges are responsible for attempting to detect a speller's misunderstanding, it is sometimes impossible to detect a misunderstanding until an error has been made. The judges are not responsible for the speller's misunderstanding. Pronouncer errors: The judges compare the pronouncer's pronunciation with the diacritical markings in the word list. If the judges feel that the pronouncer's pronunciation does not match the pronunciation specified in the diacritical markings, the judges direct the pronouncer to correct the error as soon as it is detected. Disqualifications for reasons other than error: The judges will disqualify a speller: (1) who refuses a request to start spelling (2) who does not approach the microphone when it is time to receive the word or question; (3) who does not comply with the eligibility requirements; (4) who, or whose family, engages in conduct that does not promote fair honest rivalry, courteous relations and graceful acceptance of competition results; (5) who, in the process of retracing a spelling, alters the letters or sequence of letters from those first uttered; (6) who, in the process of spelling, utters unintelligible or nonsense sounds; or (7) who, in the process of providing an answer in an oral vocabulary round, provided a blend of correct and incorrect information. (For example: In answering the question, "What is porridge made from? A. fur, or B. grain," the speller provides an answer either "A. grain" or "B. fur.") Speller activities that do not merit disqualification: The judges may not disqualify a speller: (1) for failing to pronounce the word either before or after spelling it; (2) for asking a question; or (3) for noting or failing to note the capitalization of a word, the presence of a diacritical mark, the presence of a hyphen or other form of punctuation or spacing between words in an open compound.

6. Speller's role: In a spelling round, the speller makes an effort to face the judges and pronounce the word for the judges before spelling it and after spelling it. The speller makes an effort to pronounce each letter distinctly with sufficient volume to be understood by the judges. The speller may ask the pronouncer to say the word again, define it, use it in a sentence, provide the part of speech, provide the language(s) of

origin, and/or provide an alternate pronunciation or pronunciations as listed on the pronouncer's competition list. The speller does not need to note capitalization of a word, presence of diacritical marks, presence of hyphens or other forms of punctuation, or spacing between words in an open compound. To be judged as correct and move on to the next round, the speller must provide the correct letters in the correct order. In an oral vocabulary round, the correct answer is the answer that most closely reflects the definition of the word. A speller may answer the item by providing (1) the letter associated with the chosen answer along with the chosen answer, or (2) the chosen answer alone. If the answer is identified by the associated letter alone, the officials should prompt the speller to provide the text of their answer. For example: If the speller is offered the question, "What is porridge made from? A. fur, or B. grain," the following methods of answering are correct: "grain" or "B. grain."

7. **Errors:** Upon providing an incorrect spelling of a word or an incorrect answer to a vocabulary question, the speller is immediately disqualified from the competition, except as provided in Rule 8.

8. **End-of-bee procedure:** If all spellers in a round misspell or answer vocabulary questions incorrectly: If none of the spellers remaining in the spelling bee at the start of a round spells a word correctly or answers a vocabulary question correctly during that round, all remain in the competition and a new spelling round begins. Ties: All spellers eliminated in the same round are tied for the same place. After the champion has been determined, spelling bee officials may opt to conduct tiebreakers (of their own design) if tiebreakers are necessary for the awarding of prizes or the determination of qualifying spellers for the next level of competition. If only one speller in a round spells correctly or answers a vocabulary question correctly: If only one speller spells correctly or answers a vocabulary question correctly in a round, a new spelling round begins and the speller is given an opportunity to spell a word on the list (anticipated championship word). If the speller succeeds in correctly spelling the anticipated championship word in this round, the speller is declared the champion. Example: In Round 8 there are three spellers. Speller A spells correctly and Spellers B and C misspell. Round 9 begins, and Speller A is offered the anticipated championship word and misspells. Round 10 begins and includes Spellers A, B, and C. The rules prescribe that spellers A, B, and C spell in their original order; therefore, Speller A gets the next word on the list even though Speller A misspelled the previous word on the list. Round 10 is not complete until all three spellers have spelled. Tip: Spelling bee officials are encouraged to designate a record keeper or judge to track the progress of spellers throughout the rounds. The record keeper's information will be helpful in preventing end-of-bee confusion. Teachers and regional partners may access a recordkeeping sheet by logging in to spellingbee.com. It is best practice for the record keeper, to use a device to record each speller's turn. These recordings can be accessed by the judges in case of any confusion or in the event of an appeal.

9. **Appeals:** Provided that the appellant adheres to the Time and Manner Requirements specified herein, the judges will review appeals and render decisions on the following five grounds: (A) The speller correctly spelled the word but was eliminated for misspelling it; failing to say the word before or after spelling it; failing to indicate capitalization, hyphen, spaces or diacritical marks; or incorrectly indicating capitalization, hyphen, spaces or diacritical marks. (B) The speller correctly spelled a homonym of the word in question and was not given the definition of the word. (C) In an oral vocabulary round, the speller correctly identified an answer matching the definition of a homonym of the word. (D) The speller correctly spelled an alternate spelling of the word as listed in

official dictionary: (1) whose pronunciation is identical to all pronunciations of the word in question, (2) whose definition is identical to the definition provided for the word in question, and (3) that is clearly identified as a standard variant of the word in question. (E) The officials did not adhere to Rule 8, the End-of-Bee procedure. Invalid grounds for reinstatement: The judges will not entertain appeals on the following grounds: • The pronouncer allegedly mispronounced the word. • The pronouncer offered pronunciations and/or word information that the speller did not request, and the unrequested information contributed to the misspelling. • One or all Bee officials indicated to the speller that the speller was pronouncing the word correctly, but the speller's spelling indicates that the speller wasn't pronouncing it correctly. • One or all Bee officials did not inform the speller before spelling that the speller's pronunciation was incorrect and/or that the speller was misunderstanding the word, and this inaction contributed to the misspelling. • The speller offered a correct spelling as indicated in a dictionary other than Merriam-Webster Unabridged or other online or print sources. • The pronouncer did not answer a root word question or provide the correct root word. • The pronouncer did not honor the speller's request to slow down the pronunciation of the word, break the word's pronunciation into syllables, or provide an alternate definition or sentence.

Time and Manner Requirements: A written appeal must be hand-delivered to the designated official (usually the spelling bee coordinator/director) indicating the speller's name, the name and contact information of the person filing the appeal, the relationship of the person filing the appeal to the speller (must be a parent, guardian, teacher or principal of the speller), the word in question, and the grounds for reinstatement. (See Grounds A-E herein.) The deadline for delivering an appeal is before the speller affected would have received their next word or vocabulary question had they stayed in the spelling bee. To minimize disruptions, however, effort should be made to deliver an appeal by the end of the round in which the speller was eliminated. When five or fewer spellers remain, the written appeal requirement is suspended, and an oral appeal must be made before the speller would have received their next word had they stayed in the spelling bee. While the competition is in session, individuals who have filed appeals may not directly approach the judges unless explicit permission to approach the judges has been given. The judges will make an announcement if they decide to reinstate the speller. To minimize disruption to the pace of the spelling bee and the concentration of the spellers, the judges are under no obligation to stop the spelling bee to discuss with the speller, speller's parent(s), legal guardian or teacher a denied appeal.

Thank you to our 2024 Arizona Spelling Bee Sponsors!

Bashas'

HARRISON
MIDDLETON
UNIVERSITY

**SHOP ARIZONA
SPELLING BEE GEAR!**

SCAN TO SHOP ONLINE



**DONATE NOW TO HELP AEF® REACH HALF A MILLION
STUDENTS, TEACHERS, AND ADMINISTRATORS EACH YEAR!**

ways to donate

DONATE SECURELY ONLINE

www.azedfoundation.org/donate

DONATE VIA CHECK TO

Arizona Educational Foundation

PO BOX 32906

Phoenix, AZ 85064

SCAN TO DONATE



ARIZONA
EDUCATIONAL FOUNDATION

ARIZONA
SPELLING
BEE